



CAMPORESE
MACCHINE GRAFICHE



MASK PRO⁺

Efficiente. Affidabile. Made in Italy.

MASK PRO

«The first Italian professional machine for the production of surgical masks, turnkey and fully automatic to face the global emergency.»



*Progettata, prodotta
e testata in Italia.*

Technology

Reliability & Assistance

Performance

MASK PRO⁺

la mascherina

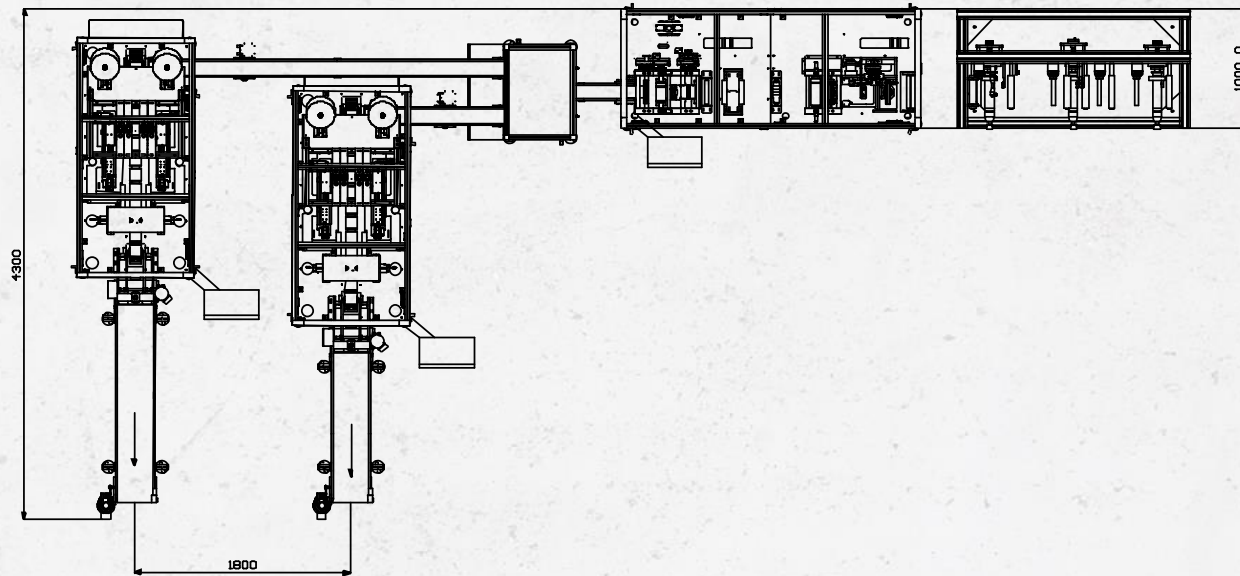
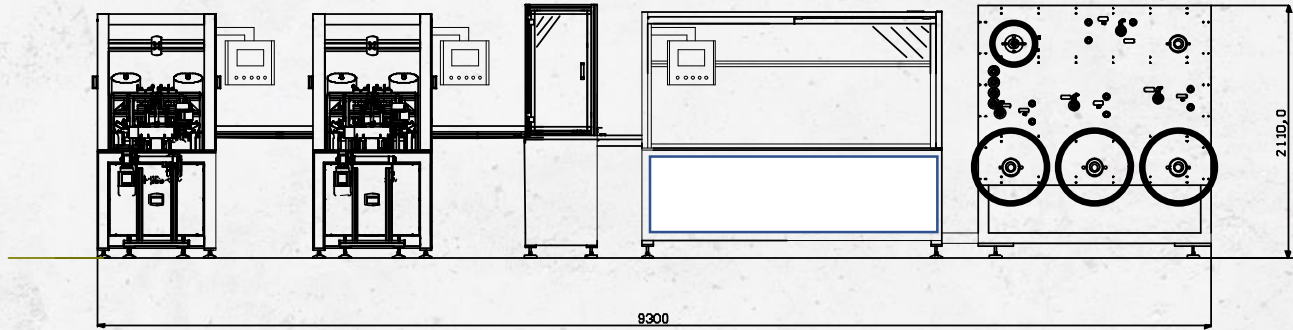


It is possible to supply a packing or boxing system together with the machinery

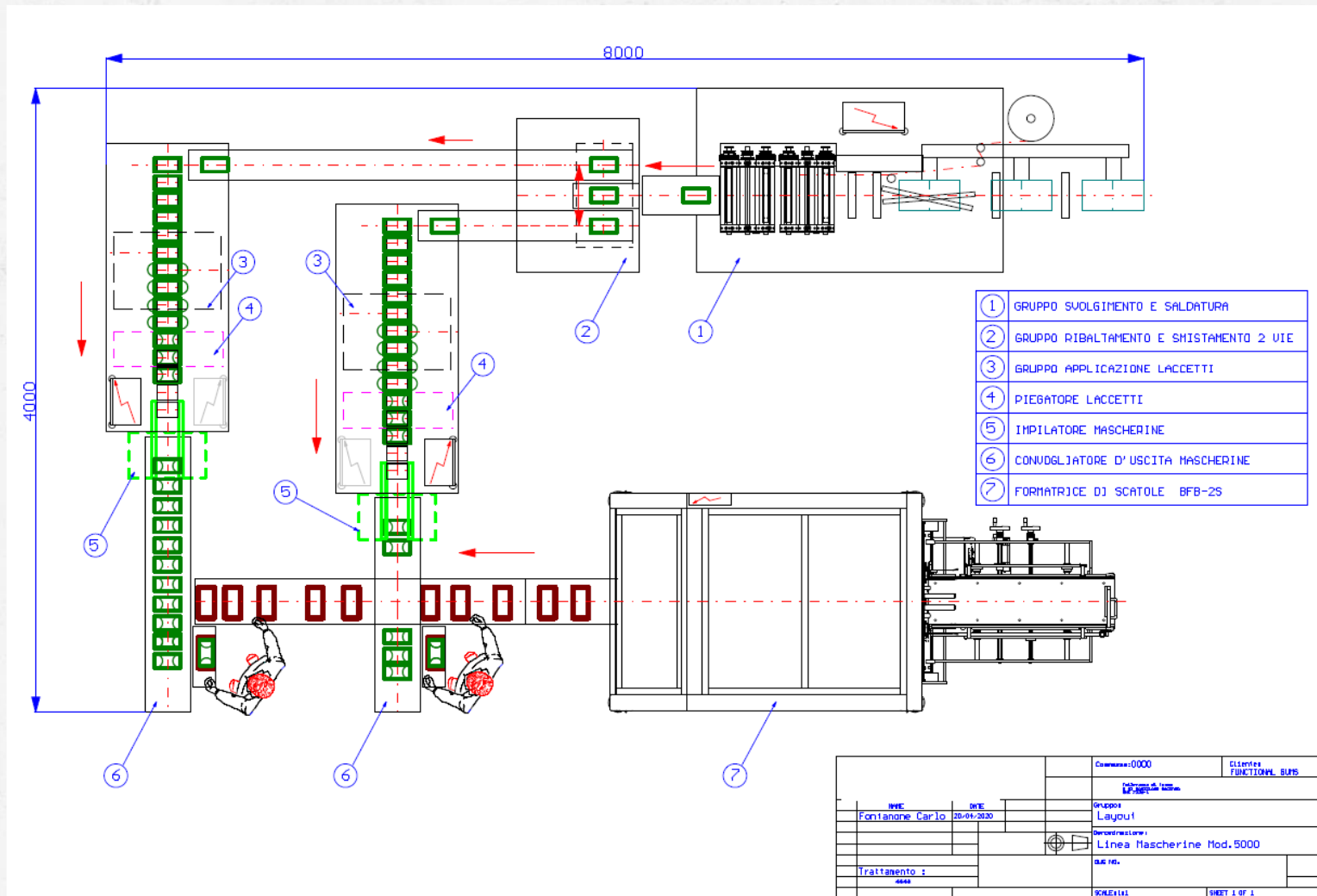
Specifications

dimensions Lx W x H	9300 X 4300 X 2100mm (11100 x 4570 x 2100mm)
weight	5000Kg
material	inox steel - anodized aluminium - titanium
max non-woven fabric width	220mm
max coil diameter	600mm (up to 1000mm upon request)
coil fitting diameter	3" (76mm)
mask dimensions	175 X 95 mm
mask dimensions (baby)	145 X 95 mm
external diameter elastic laces coil	250 mm
elastic lenght	max 200mm /min 150mm (automatic regulation)
underwire lenght	100mm (automatic regulation)
ultrasound welding system	Weber 20kHz /35kHz
air pressure	6bar
electric voltage	380V 3F+N
installed electrical power	24 kW
absorbed power	100A
servomotors	Schneider
control PLC	Schneider
HMI operator panels	Schneider 7"
remote assistance	yes
4.0 industry ready	yes
anti-fog flap	optional
double underwire	optional

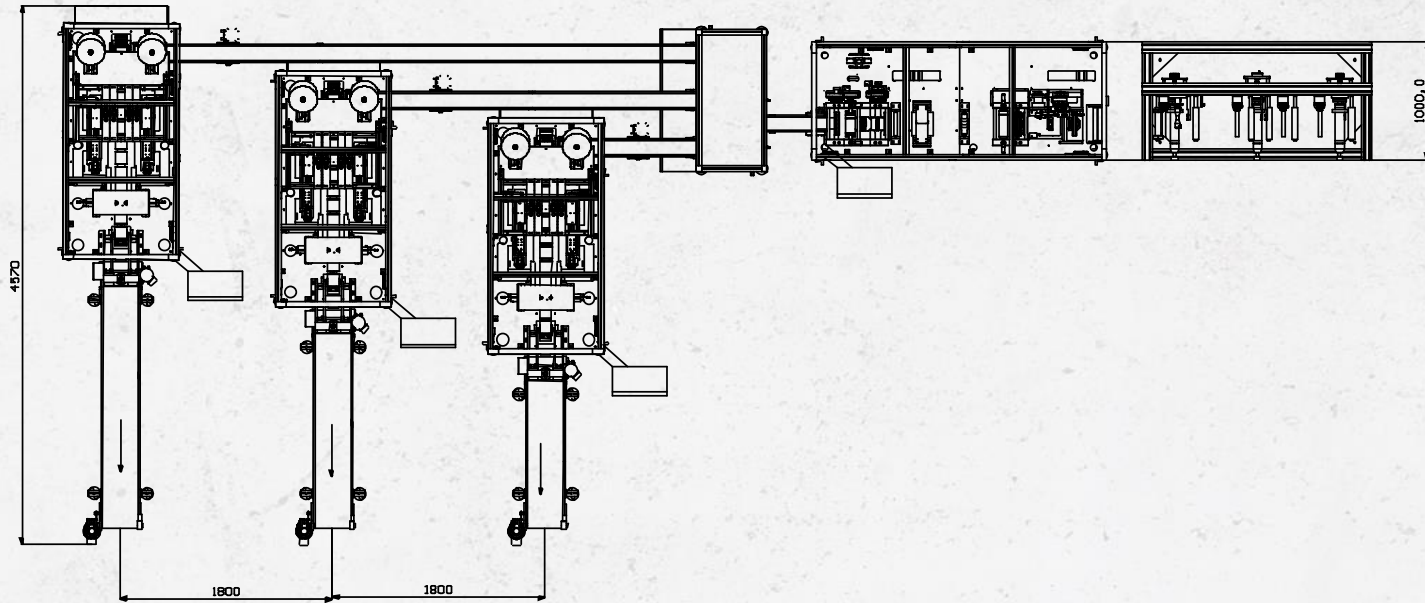
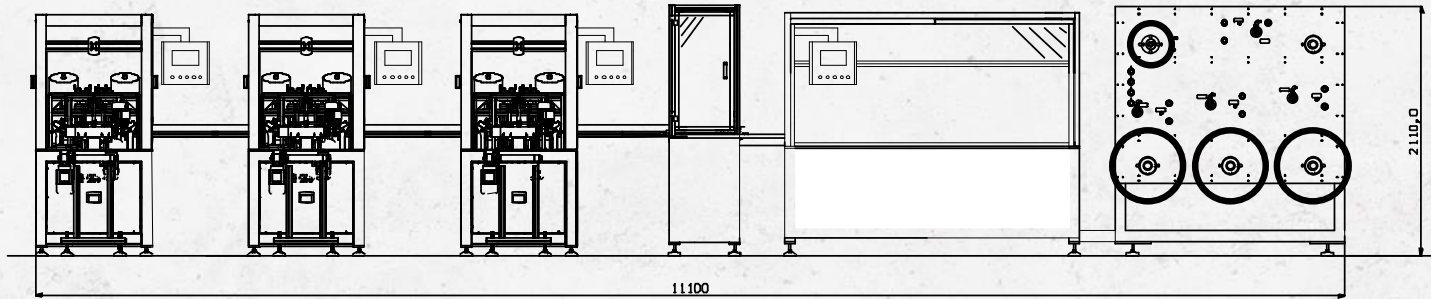
2-output layout



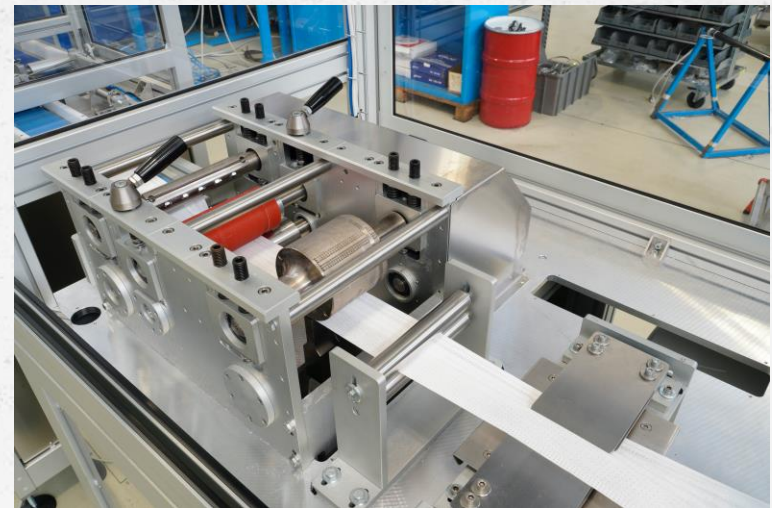
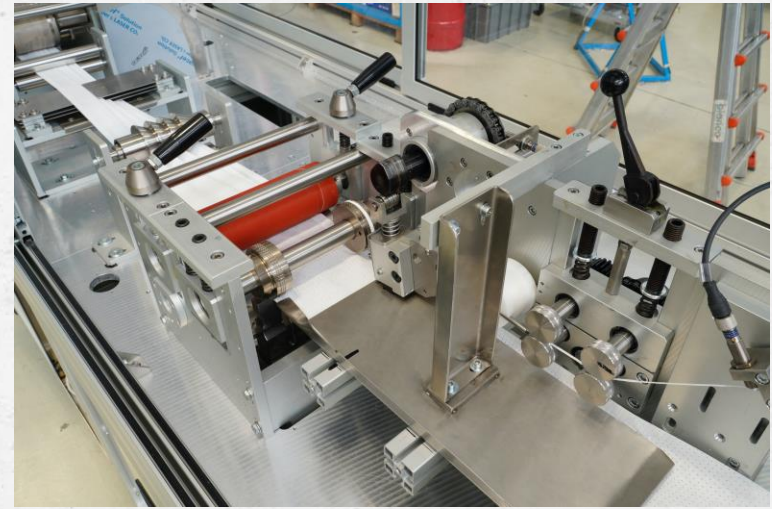
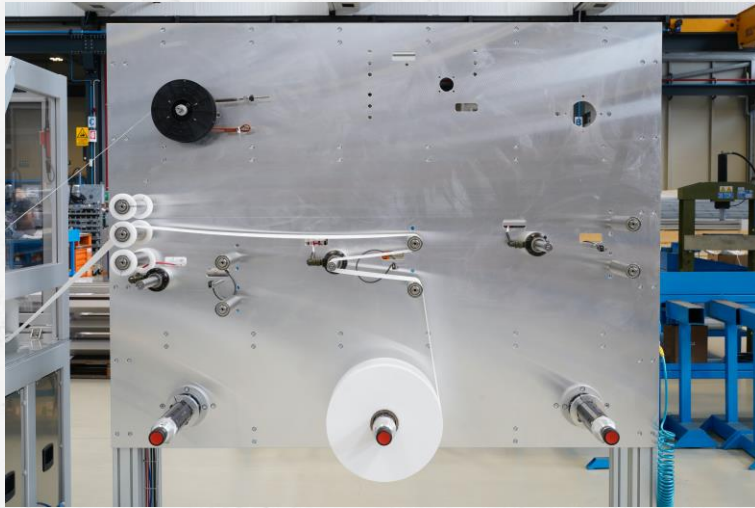
2-output layout



3-output layout



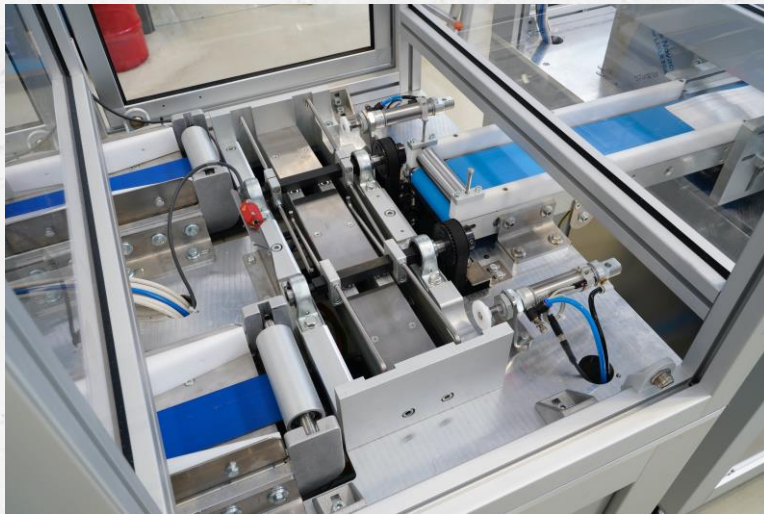
Unwinding and welding



Unwinding and welding



Overturning and sorting



Laces welding

